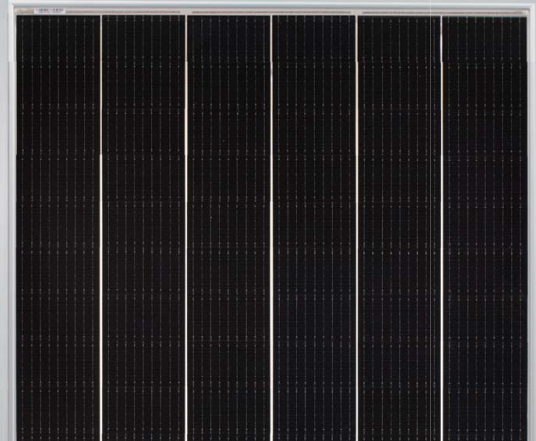


# Tiger Bifacial 445-465Watt

Tiling Ribbon (TR) Technology

Positive power tolerance of 0~+3%



## KEY FEATURES



### TR technology + Half Cell

TR technology with Half cell aims to eliminate the cell gap to increase module efficiency (bi-facial up to 20.43%)



### 9BB instead of 5BB

9BB technology decreases the distance between bus bars and finger grid line which is benefit to power increase.



### Higher lifetime Power Yield

2.5% first year degradation,  
0.55% linear degradation



### Best Warranty

12 year product warranty,  
30 year linear power warranty



### Avoid debris, cracks and broken gate risk effectively

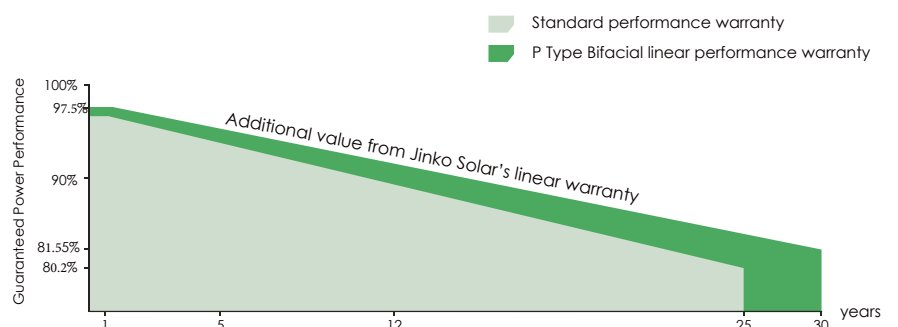
9BB technology using circular ribbon that could avoid debris, cracks and broken gate risk effectively



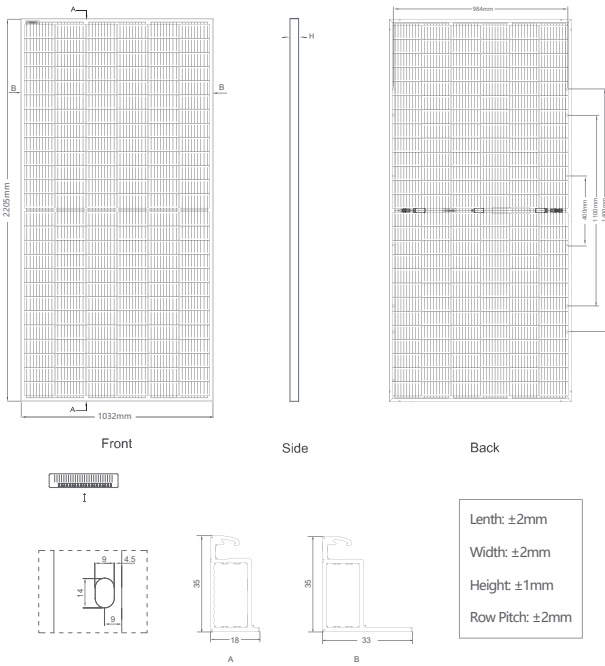
- ISO9001:2015, ISO14001:2015, ISO45001:2018 certified factory
- IEC61215, IEC61730 certified product

## LINEAR PERFORMANCE WARRANTY

12 Year Product Warranty • 30 Year Linear Power Warranty  
0.55% Annual Degradation Over 30 years



## Engineering Drawings

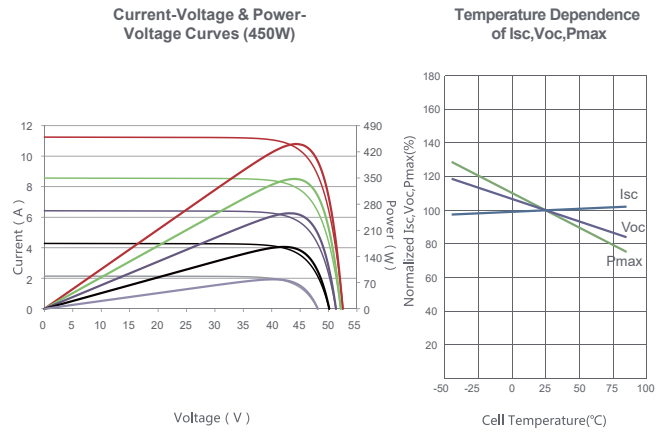


## Packaging Configuration

27pcs/pallet, 30pallets/truck, 810/truck

Packing Size/pallet: 2239 x 1125 x 1175 (mm)

## Electrical Performance & Temperature Dependence



## Mechanical Characteristics

|               |   |
|---------------|---|
| Cell Type     | P type Mono-crystalline   |
| No. of cells  | 156 (2x78)  |
| Dimensions    | 2205x1032x40mm  |
| Weight        | 26.5kg  |
| Front Glass   | 3.2mm, Anti-Reflection Coating, High Transmission, Low Iron, Tempered Glass |
| Frame         | Anodized Aluminium Alloy  |
| Junction Box  | IP67 Rated  |
| Output Cables | TUV 1x4.0mm <sup>2</sup><br>(+): 250mm, (-): 150mm or Customized Length     |

## SPECIFICATIONS

| Module Type                               | JKM445M-7RL3-TV |        | JKM450M-7RL3-TV |        | JKM455M-7RL3-TV |        | JKM460M-7RL3-TV |        | JKM465M-7RL3-TV |        |
|---|-----------------|--------|-----------------|--------|-----------------|--------|-----------------|--------|-----------------|--------|
|   | STC             | NOCT   | STC             | NOCT   | STC             | NOCT   | STC             | NOCT   | STC             | NOCT   |
| Maximum Power (Pmax)                      | 445Wp           | 331Wp  | 450Wp           | 335Wp  | 455Wp           | 339Wp  | 460Wp           | 342Wp  | 465Wp           | 346Wp  |
| Maximum Power Voltage (Vmp)               | 43.13V          | 39.51V | 43.32V          | 39.84V | 43.38V          | 39.95V | 43.44V          | 40.05V | 43.50V          | 40.11V |
| Maximum Power Current (Imp)               | 10.32A          | 8.38A  | 10.62A          | 8.59A  | 10.72A          | 8.66A  | 10.82A          | 8.73A  | 10.92A          | 8.81A  |
| Open-circuit Voltage (Voc)                | 51.60V          | 48.70V | 51.90V          | 48.99V | 52.00V          | 49.08V | 52.10V          | 49.18V | 52.16V          | 49.23V |
| Short-circuit Current (Isc)               | 11.08A          | 8.95A  | 11.35A          | 9.17A  | 11.44A          | 9.24A  | 11.53A          | 9.31A  | 11.63A          | 9.39A  |
| Module Efficiency STC (%)                 | 19.56%          |        | 19.78%          |        | 20.00%          |        | 20.21%          |        | 20.43%          |        |
| Operating Temperature (°C)                | -40°C~+85°C     |        |                 |        |                 |        |                 |        |                 |        |
| Maximum system voltage                    | 1500VDC (IEC)   |        |                 |        |                 |        |                 |        |                 |        |
| Maximum series fuse rating                | 25A             |        |                 |        |                 |        |                 |        |                 |        |
| Power tolerance                           | 0~+3%           |        |                 |        |                 |        |                 |        |                 |        |
| Temperature coefficients of Pmax          | -0.35%/°C       |        |                 |        |                 |        |                 |        |                 |        |
| Temperature coefficients of Voc           | -0.28%/°C       |        |                 |        |                 |        |                 |        |                 |        |
| Temperature coefficients of Isc           | 0.048%/°C       |        |                 |        |                 |        |                 |        |                 |        |
| Nominal operating cell temperature (NOCT) | 45±2°C          |        |                 |        |                 |        |                 |        |                 |        |
| Refer. Bifacial Factor                    | 70±5%           |        |                 |        |                 |        |                 |        |                 |        |

## BIFACIAL OUTPUT-REAR SIDE POWER GAIN

|     |                           | 467Wp  | 473Wp  | 478Wp  | 483Wp  | 488Wp  |
|-----|---------------------------|--------|--------|--------|--------|--------|
| 5%  | Maximum Power (Pmax)      | 467Wp  | 473Wp  | 478Wp  | 483Wp  | 488Wp  |
|     | Module Efficiency STC (%) | 20.99% | 21.23% | 21.46% | 21.69% | 21.92% |
| 15% | Maximum Power (Pmax)      | 512Wp  | 518Wp  | 523Wp  | 529Wp  | 535Wp  |
|     | Module Efficiency STC (%) | 22.99% | 23.25% | 23.50% | 23.75% | 24.01% |
| 25% | Maximum Power (Pmax)      | 556Wp  | 563Wp  | 569Wp  | 575Wp  | 581Wp  |
|     | Module Efficiency STC (%) | 24.99% | 25.27% | 25.54% | 25.82% | 26.09% |

\* STC: Irradiance 1000W/m<sup>2</sup> Cell Temperature 25°C

AM=1.5

NOCT: Irradiance 800W/m<sup>2</sup> Ambient Temperature 20°C

AM=1.5

Wind Speed 1m/s

\* Power measurement tolerance: ± 3%

The company reserves the final right for explanation on any of the information presented hereby. TR JKM445-465M-7RL3-TV-A1-EN